



CSRS-PPP (V 1.05 11216)



Log.obs		
Data Start	Data End	Duration of Observations
2017-04-04 10:19:05.000	2017-04-04 12:43:45.000	2h 24m 40.00s
Apri / Aposteriori Phase Std	Apri / Aposteriori Code Std	
0.015m / 0.011m	2.0m / 3.385m	
Observations	Frequency	Mode
Phase and Code	L1 and L2	Static
Elevation Cut-Off	Rejected Epochs	Observation & Estimation Steps
10.000 degrees	0.00 %	1.00 sec / 1.00 sec
Antenna Model	APC to ARP	ARP to Marker
	Ant. not in PPP (0 m)	0.000 m

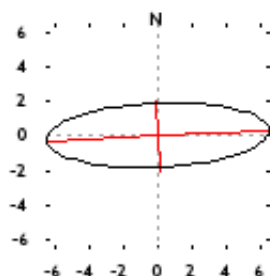
(APC = antenna phase center; ARP = antenna reference point)

Estimated Position for Log.obs

	Latitude (+n)	Longitude (+e)	Ell. Height
ITRF14 (2017)	55° 45' 22.7023''	37° 42' 28.9580''	183.374 m
Sigmas(95%)	0.015 m	0.052 m	0.048 m
Apriori	55° 45' 22.745''	37° 42' 28.978''	199.879 m
Estimated - Apriori	-1.312 m	-0.340 m	-16.505 m

95% Error Ellipse (cm)

semi-major: 6.500cm
semi-minor: 1.866cm
semi-major azimuth: 87° 29' 10.67''



UTM (North) Zone 37

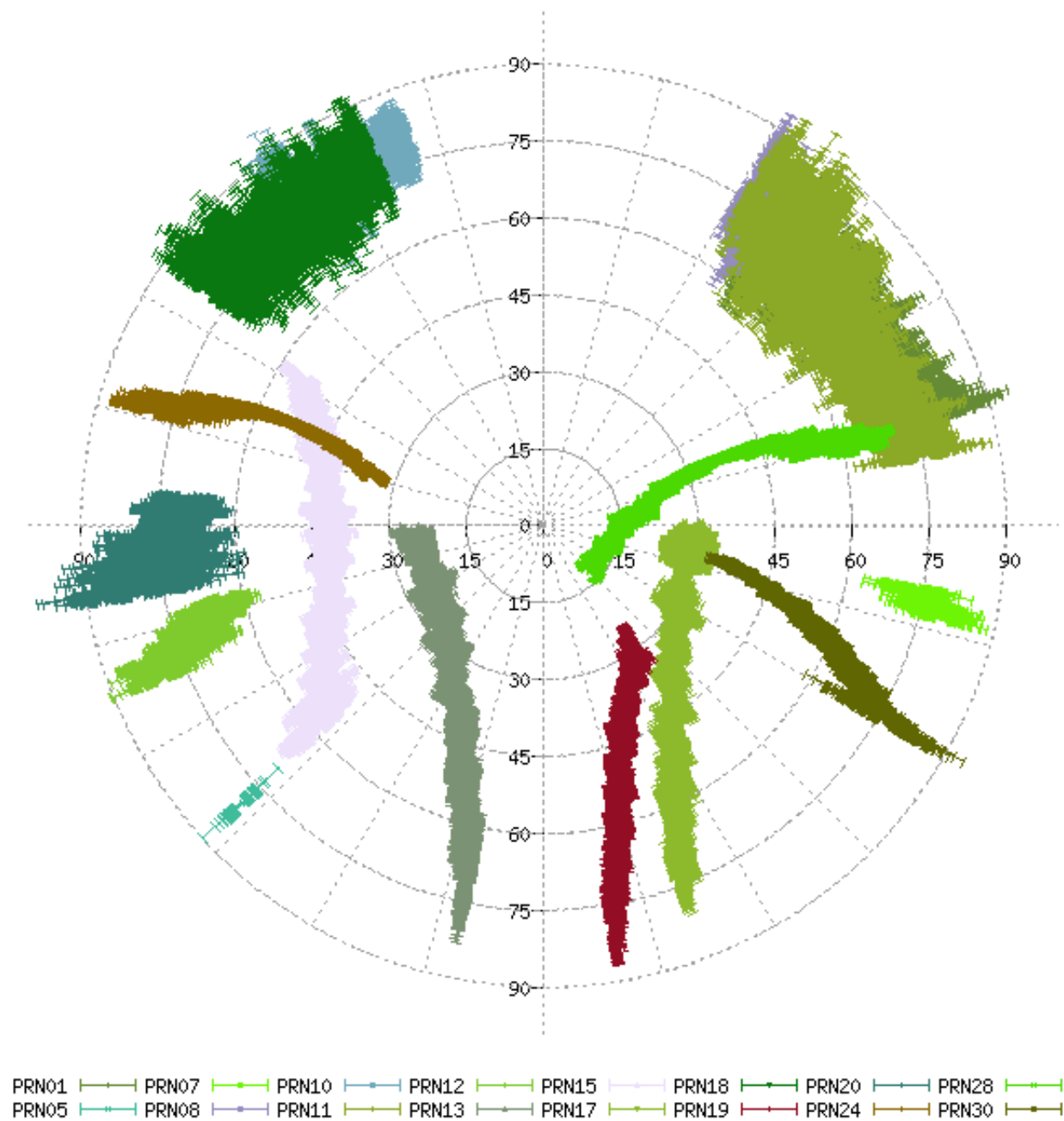
6179713.390m (N) 418919.752m (E)

Scale Factors
0.99968064 (point)
0.99965187 (combined)

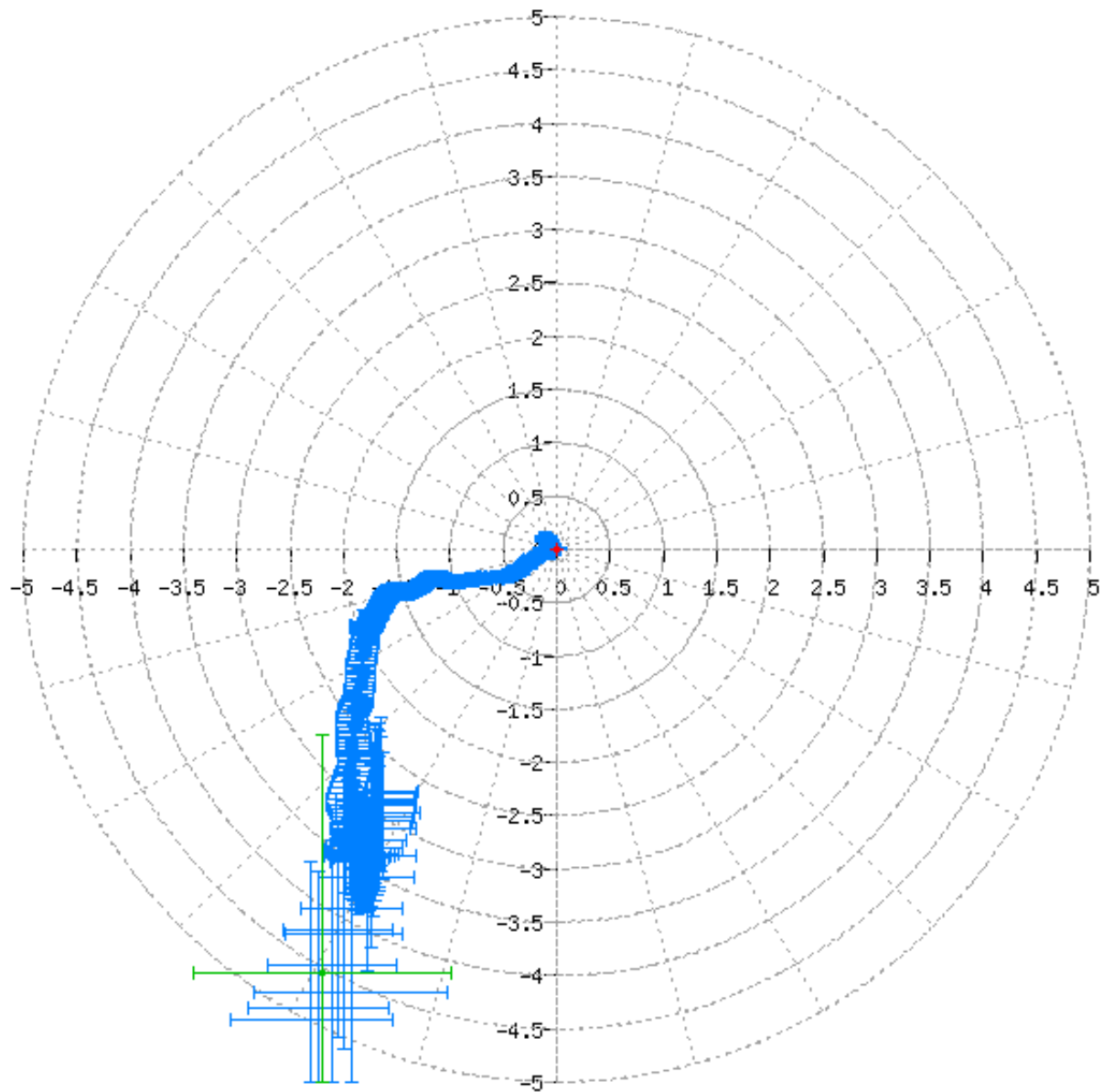
(Coordinates from RINEX file used as apriori position)

Estimated Parameters & Observations Statistics

Pseudo-Range Residuals Sky Distribution

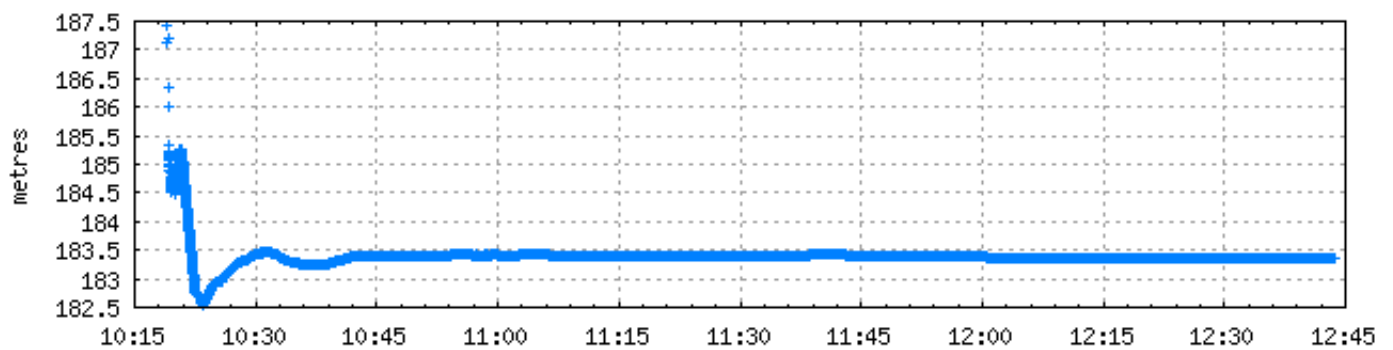


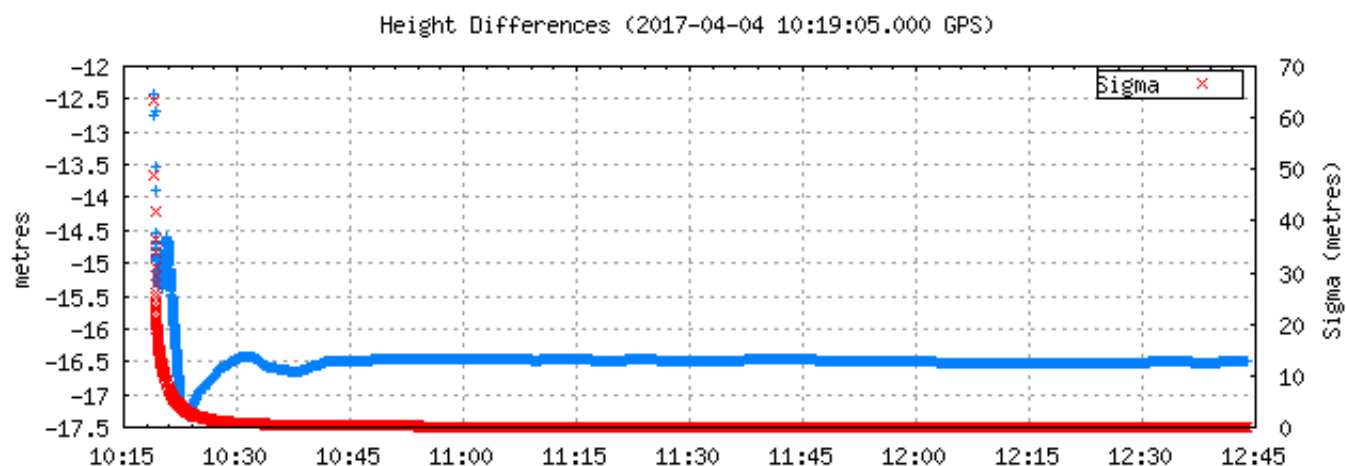
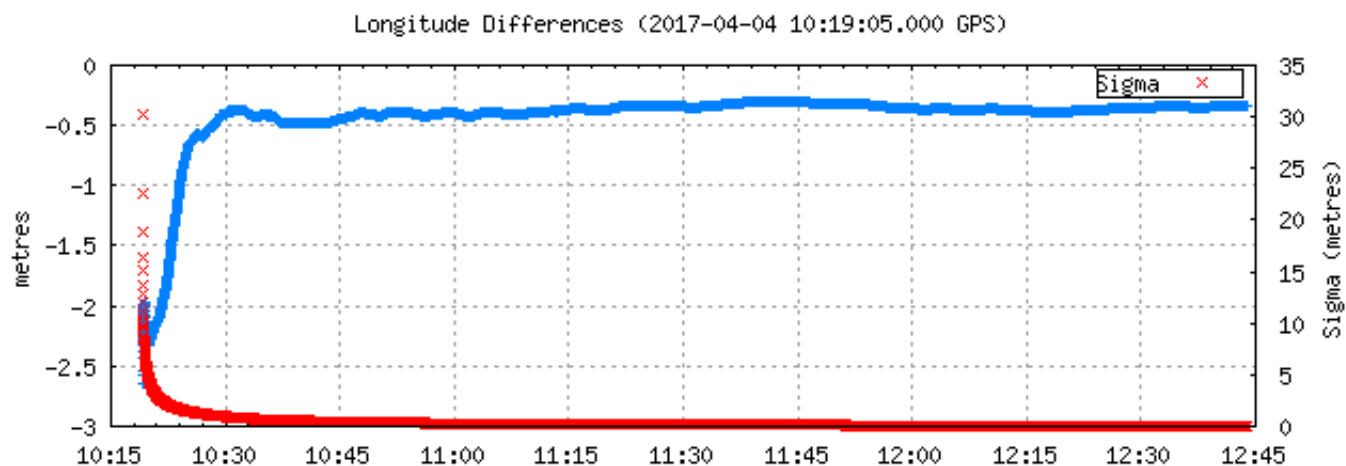
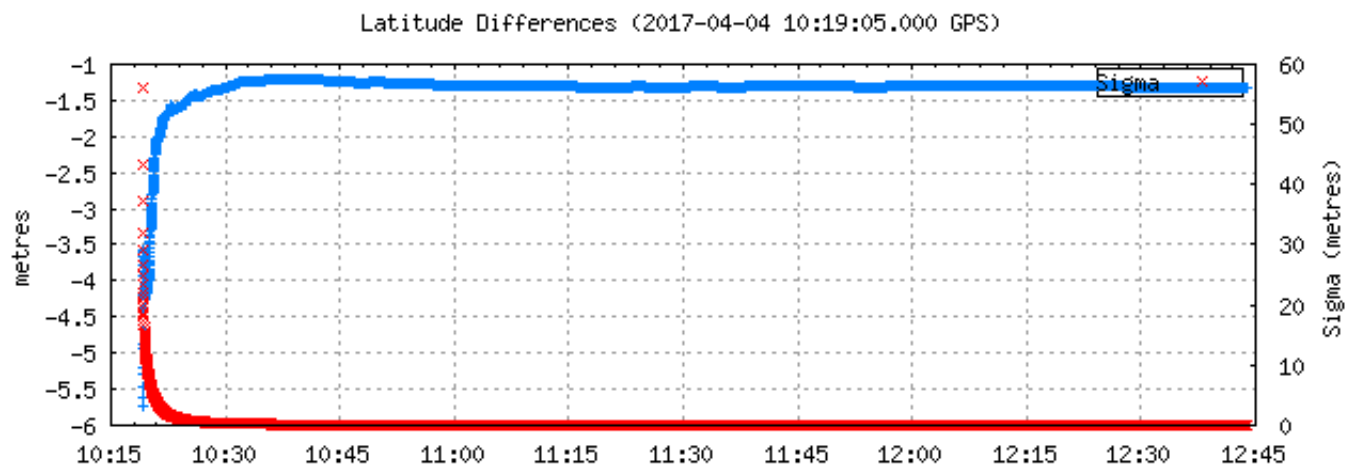
Corrections to apriori position (minus final corrections) (metres)

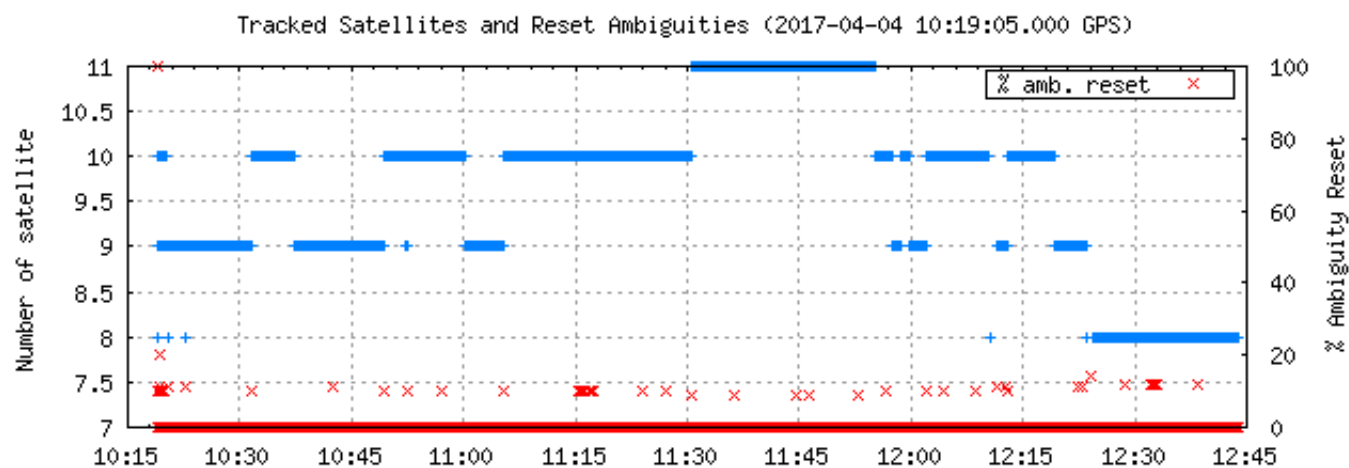
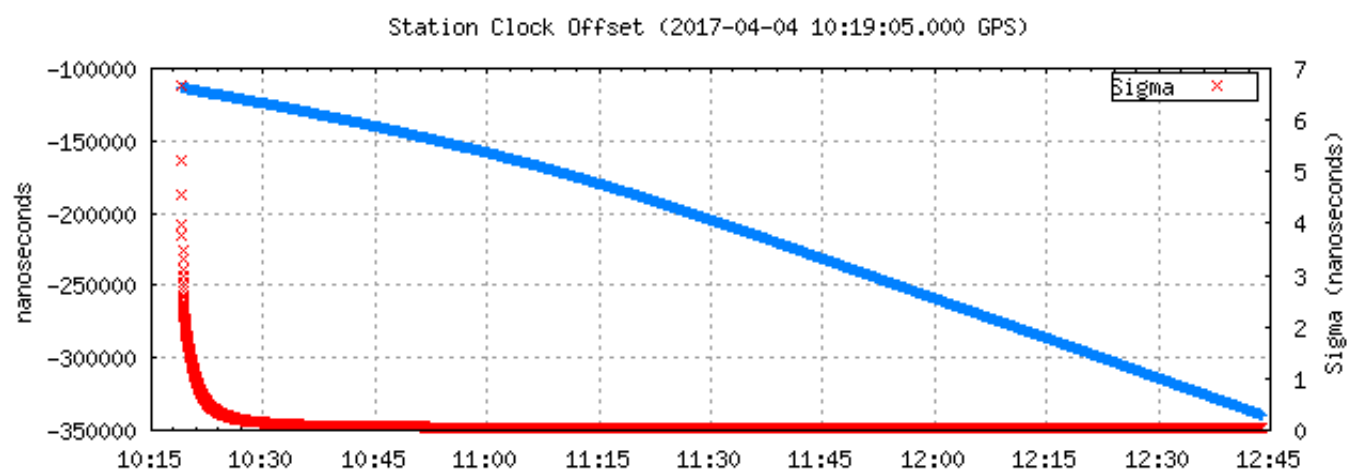
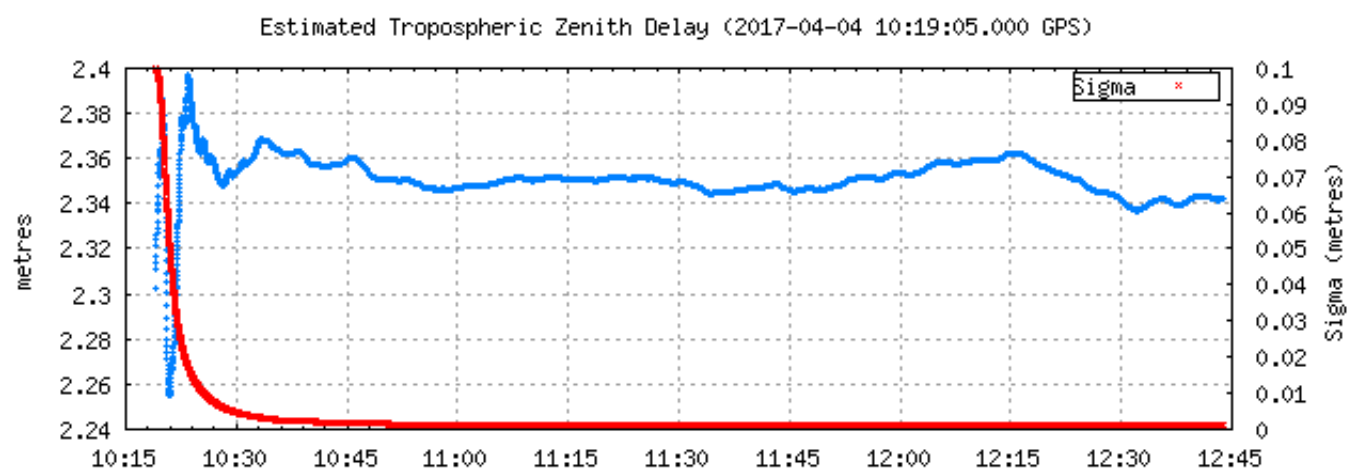


(1 sigma std of position corrections) / 25 —+—
 (1 sigma std of initial position correction) / 25 —+—
 (1 sigma std of final position correction) / 25 —+—

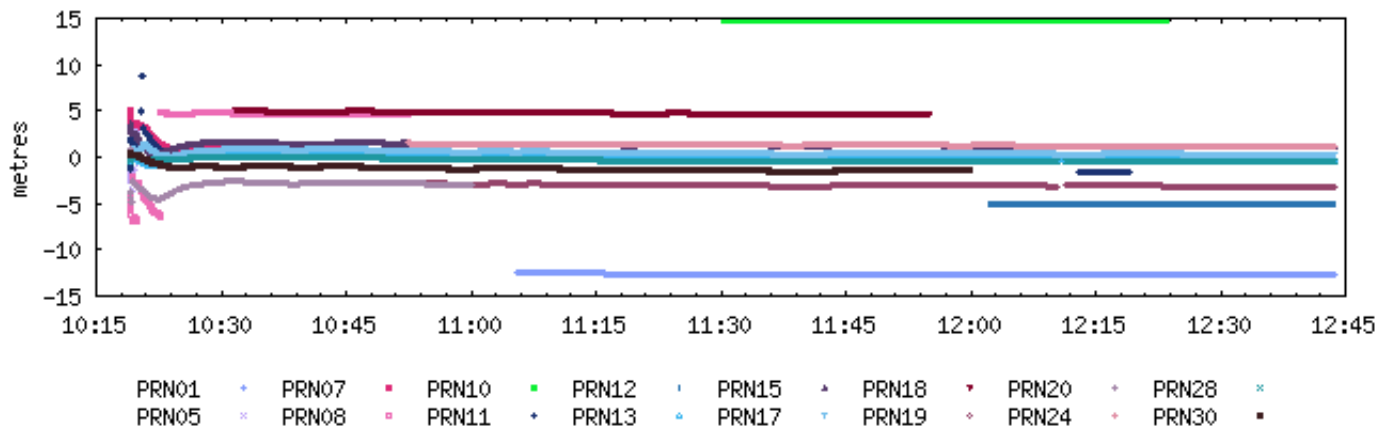
Ellipsoidal Height Profile (2017-04-04 10:19:05.000 GPS)



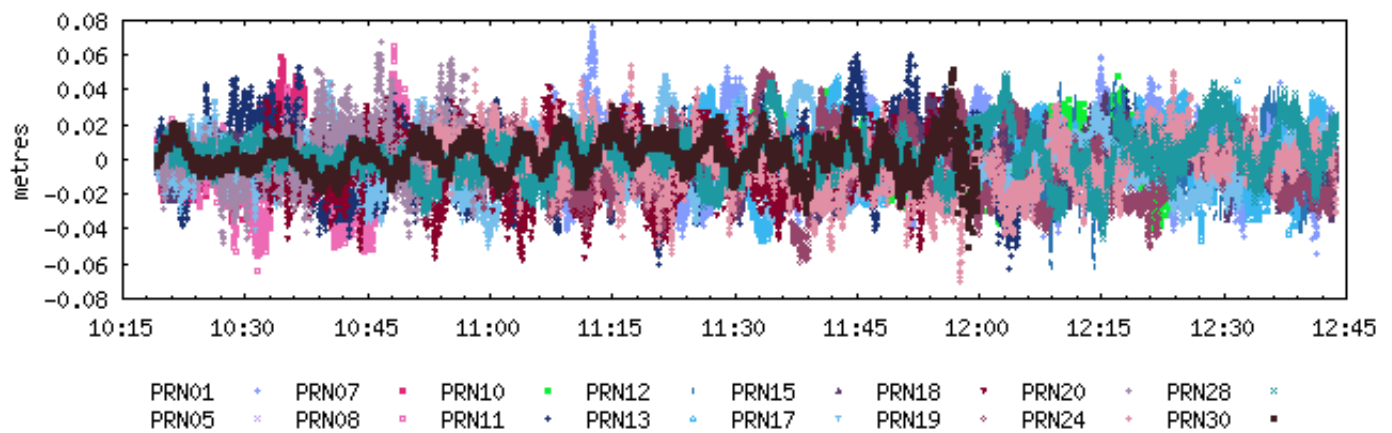




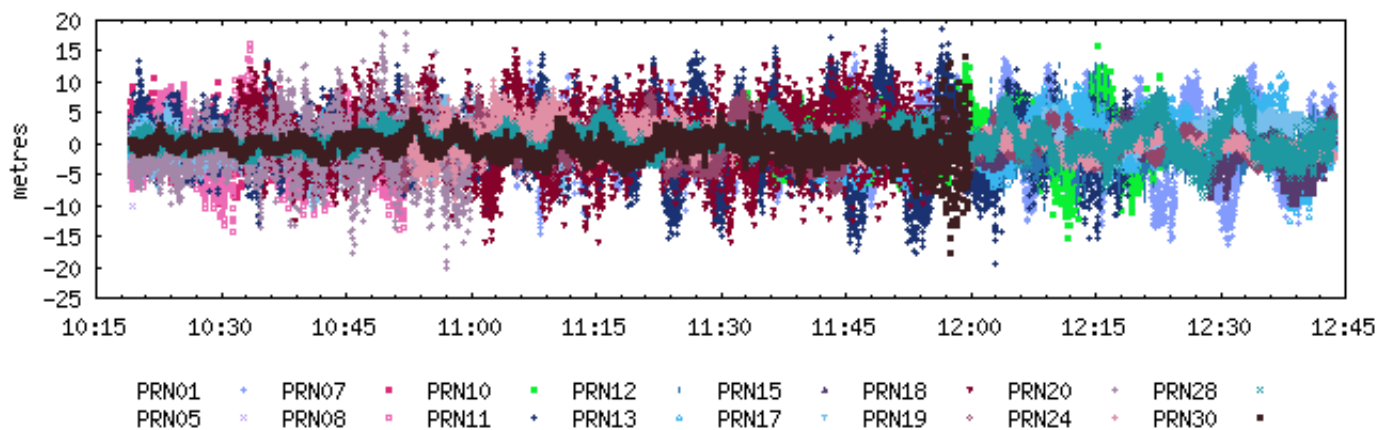
Ambiguities (2017-04-04 10:19:05.000 GPS)



Carrier-Phase Residuals (2017-04-04 10:19:05.000 GPS)



Pseudo-Range Residuals (2017-04-04 10:19:05.000 GPS)



~~~ Disclaimer ~~~

Natural Resources Canada does not assume any liability deemed to have been caused directly or indirectly by any content of its PPP-On-Line positioning service.

If you have any questions, please feel free to contact:

E-Mail: nrcan.geodeticinformationservices.nrcan@canada.ca

Phone: 343-292-6617



**Natural Resources
Canada**

**Ressources naturelles
Canada**

Canada